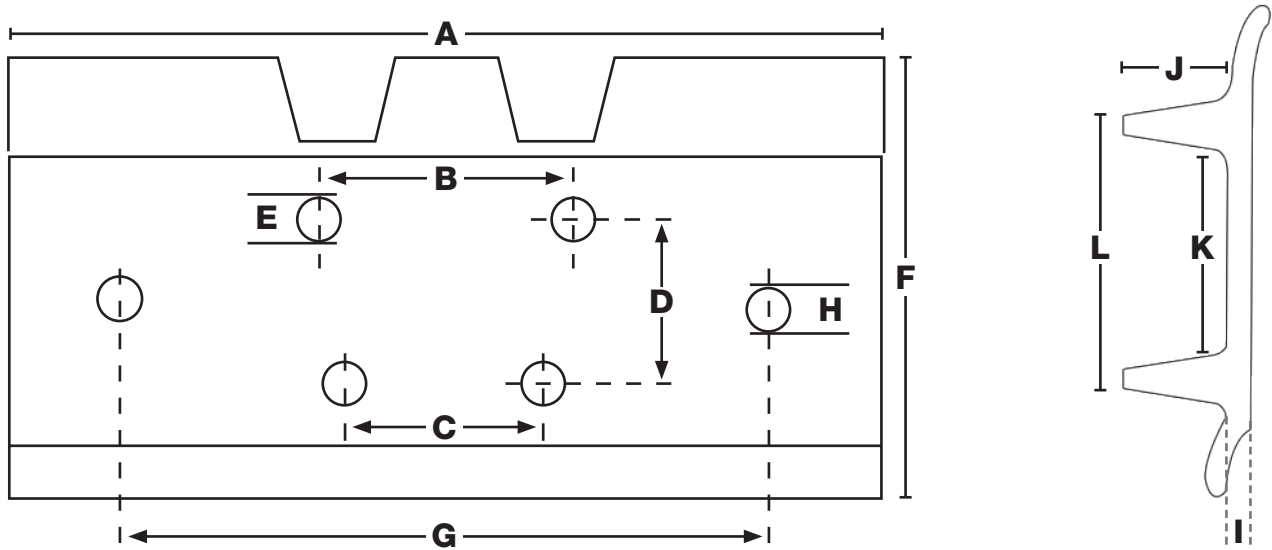


**DOUBLE BAR GROUSER WORKSHEET**

*This worksheet will help confirm which pad best suits your steel grouser.  
 Please complete and fax to BLS at 630-775-0903.*

Machine Manufacturer: \_\_\_\_\_

Machine Model #: \_\_\_\_\_



**MEASUREMENTS (inch or mm):**

- |                                                                   |                                                                      |
|-------------------------------------------------------------------|----------------------------------------------------------------------|
| A = _____ Grouser Width                                           | G = _____ Horizontal distance between centers of exterior bolt holes |
| B = _____ Distance between the centers of the top set of holes    | H = _____ Secondary holes diameter                                   |
| C = _____ Distance between the centers of the bottom set of holes | I = _____ Grouser thickness                                          |
| D = _____ Vertical distance between centers of both sets of holes | J = _____ Height of Grouser Bar                                      |
| E = _____ Bolt-hole diameter                                      | K = _____ Flat Area Between Grousers                                 |
| F = _____ Front to back distance                                  | L = _____ Distance Between Outside Edges of Grouser Bars             |

**Quantity of Pads Needed** \_\_\_\_\_

**CUSTOMER INFORMATION**

Name: \_\_\_\_\_ Company: \_\_\_\_\_

Phone: \_\_\_\_\_ Email: \_\_\_\_\_ Fax: \_\_\_\_\_