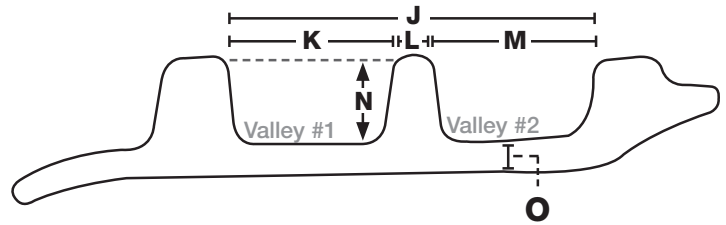
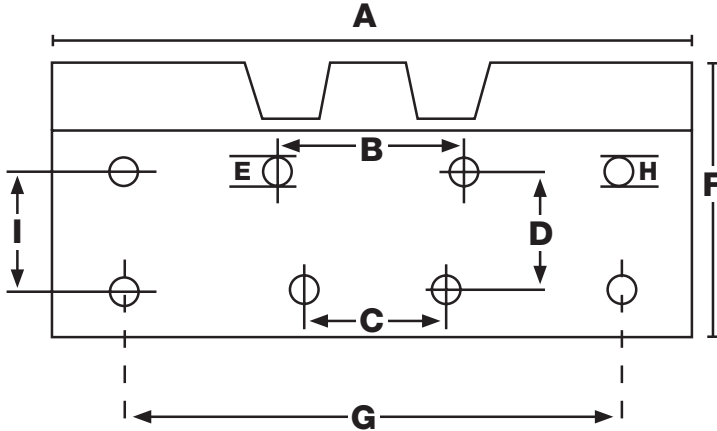


**TRIPLE BAR GROUSER BOLT-ON/CLIP-ON WORKSHEET**

*This worksheet will help confirm which pad best suits your steel grouser.  
 Please complete and fax to BLS at 630-775-0903.*

Machine Manufacturer: \_\_\_\_\_

Machine Model #: \_\_\_\_\_



**MEASUREMENTS (inch or mm):**

- A = \_\_\_\_\_ Grouser Width
- B = \_\_\_\_\_ Distance between the centers of the top set of holes
- C = \_\_\_\_\_ Distance between the centers of the bottom set of holes
- D = \_\_\_\_\_ Vertical distance between centers of both sets of holes
- E = \_\_\_\_\_ Bolt-hole diameter
- F = \_\_\_\_\_ Front to back distance
- G = \_\_\_\_\_ Horizontal distance between centers of exterior bolt holes
- H = \_\_\_\_\_ Secondary holes diameter
- I = \_\_\_\_\_ Vertical distance between centers of exterior bolt holes

- J = \_\_\_\_\_ Inside distance between front and back grouser tips
- K = \_\_\_\_\_ Inside distance between front and second grouser tips
- L = \_\_\_\_\_ Middle grouser tip width
- M = \_\_\_\_\_ Inside distance between the middle and 3rd grouser tips
- N = \_\_\_\_\_ Inside depth of the "valleys"
- O = \_\_\_\_\_ Grouser thickness

**NOTE: THE SUM OF MEASUREMENTS 'K', 'L' AND 'M' SHOULD EQUAL MEASUREMENT 'J'**

Quantity of Pads Needed \_\_\_\_\_

**CUSTOMER INFORMATION**

Name: \_\_\_\_\_ Company: \_\_\_\_\_

Phone: \_\_\_\_\_ Email: \_\_\_\_\_ Fax: \_\_\_\_\_

**IF YOU HAVE ANY QUESTIONS REGARDING THIS WORKSHEET,  
 PLEASE CONTACT YOUR SALES CONSULTANT AT 1-800-307-0299.**